

APPARTEMENT

D11

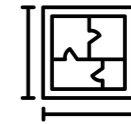
3



2



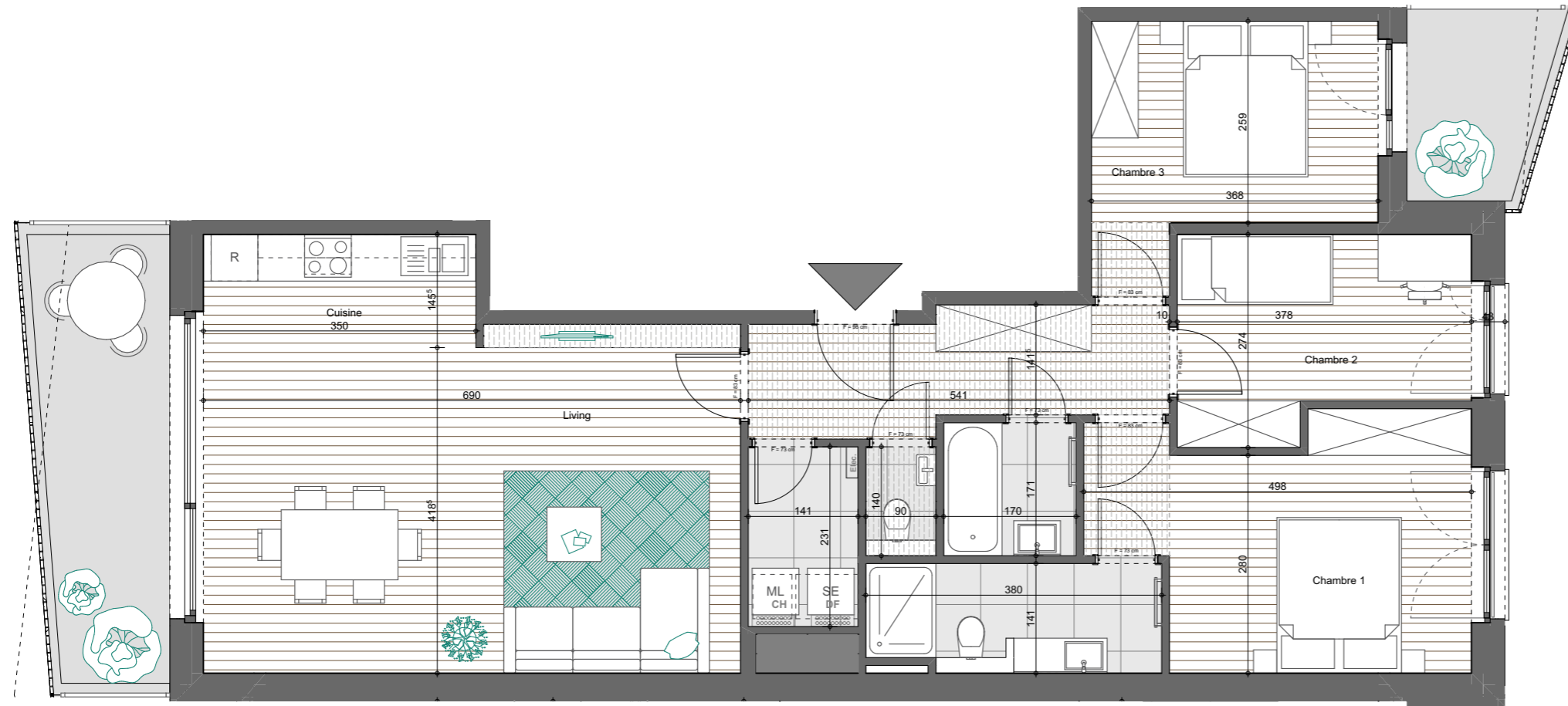
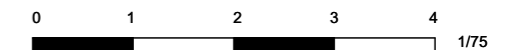
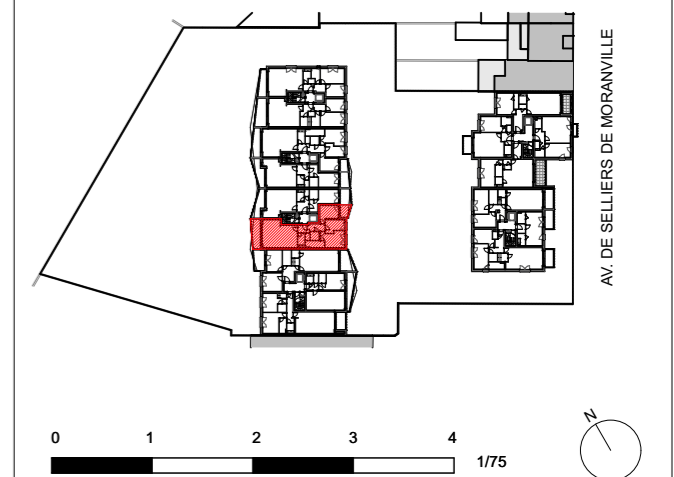
107,1 m²



15,4 m²



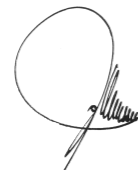
SITUATION



- Carrelage imitation parquet
- Faux-Plafond et soffites (220 min)
- Carrelage 60x60 cm
- Terrasse en dalles sur plots
- Terrasse en klinkers



ARCHITECTES



RÉALISATION



PROJET

AVENUE DE SELLIERES DE MORANVILLE

Avenue de Selliers de Moranville, 31, 1082 Berchem-Sainte-Agathe, Belgique

PLAN DE VENTE

DATE

12/04/23

ECHELLE APPARTEMENT

1/75

D11